

## SV SERIES



**Note:** Shown with flange adaptor for round installations.

- Block valve and stabilized tap are joined by a coupling nut which allows easy installation without requiring rotation of the valve
- Slotted bolt holes allow for 2-1/8" and 2-1/4" bolt spacings
- Designed to reinforce the entire installation by shifting radial-stress load away from the NPT connections
- 0.375" bore
- Non-rotating stem tip standard on block valves
- Blow-out proof stem provides a secondary stem seal in the full open position
- Metal body-to-bonnet seal
- FKM o-ring seal and PTFE back-up ring below the stem threads to protect from corrosion and galling
- Includes PTFE gaskets and Carbon Steel bolts for manifold installation
- Optional dielectric barrier creates a non-conductive shield between the instrument and the orifice fitting
- **Patent pending**

### SPECIFICATIONS

<b>Materials</b>	Zinc-Nickel plated Carbon Steel, 316 Stainless Steel*
<b>Bolts</b>	Carbon Steel
<b>Connection</b>	1/2" NPT-flange
<b>Pressure rating</b>	6,000 psi at 200 °F
<b>Orifice</b>	0.375"
<b>Flow coefficient</b>	C <sub>v</sub> 3.0
<b>Stem seal &amp; type</b>	All 316 Stainless Steel stems with FKM o-ring and PTFE back-up ring below the threads
<b>Weight</b>	Approximately 10.6 lb. (pair)

\* All 316SS products meet the requirements of NACE MR0175/ISO 15156-3.

**⚠ WARNING:** This product can expose you to chemicals including Lead and Nickel, which are known to the State of California to cause cancer and birth defects or other reproductive harm. For more information go to [www.P65Warnings.ca.gov](http://www.P65Warnings.ca.gov)

<b>ORDERING INFORMATION</b>			
<b>SERIES</b>	<b>SV</b>	Stabilized connector with integral block valve	
<b>MATERIALS</b>	<b>C</b>	Steel	<b>S</b> Stainless Steel
<b>CONNECTOR TYPES</b>	<b>1</b>	Stabilized connector pair with integral valve*	<b>2</b> Stabilized connector pair with integral valve, flange adaptor**
<b>OPTIONS†</b>	<b>DK1</b>	One Piece Dielectric Gasket, Pair	<b>DK2</b> PTFE Gasket with Dielectric Shim, Pair
	<b>DK1-SS</b>	One Piece Dielectric Gasket, Pair w/SS Bolts	<b>DK2-SS</b> PTFE Gasket with Dielectric Shim, Pair w/SS Bolts

Please consult your local NOSHOK Distributor or NOSHOK, Inc. for availability and delivery information.

† For more information on Dielectric Kits, see page 140

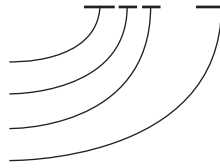
\* For flat installations (orifice fitting)

\*\* For round installations (orifice flange)

**EXAMPLE**

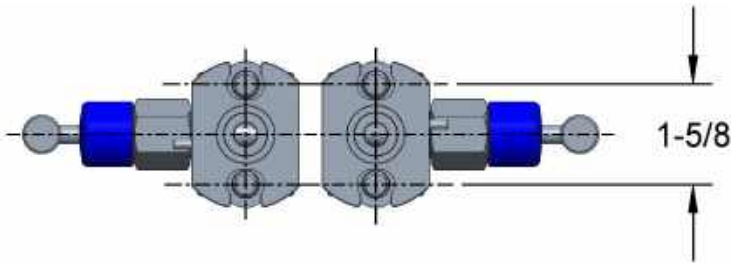
**Series** .....Connector with integral block valve  
**Material** .....Steel  
**Connector type** ..... Stabilized connector pair with integral valve  
**Option** .....One piece Dielectric gasket, pair

**SVC1 - DK1**

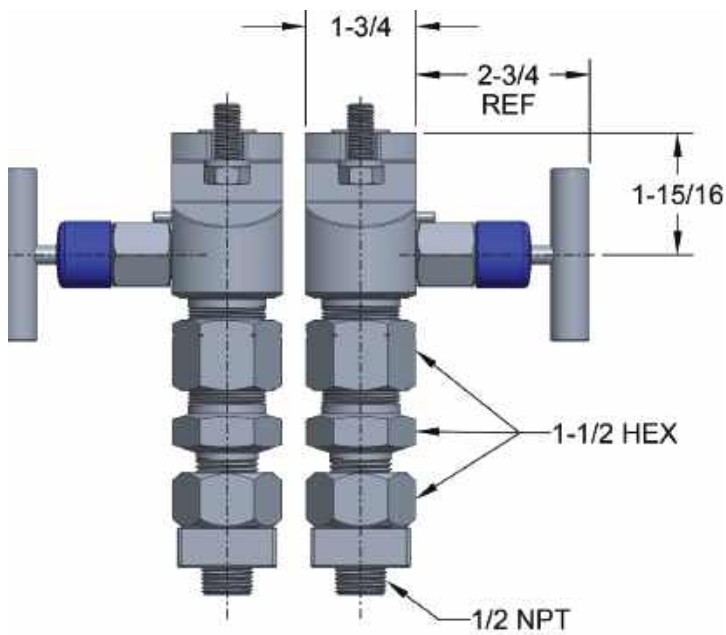


**Stabilized Connector with Integral Block Valve**

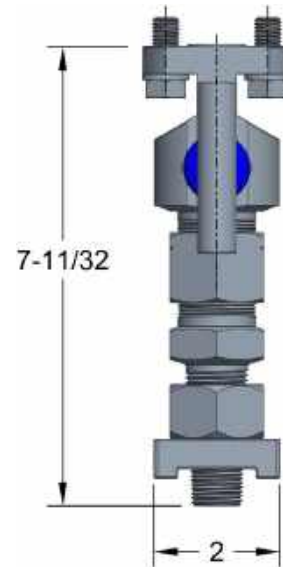
**Top View**



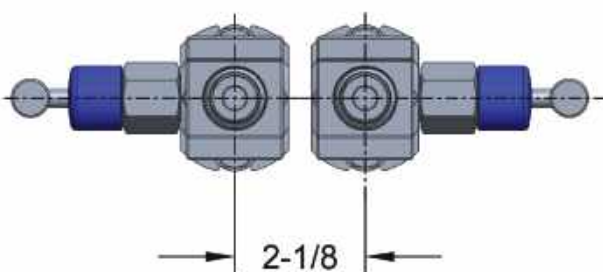
**Front View**



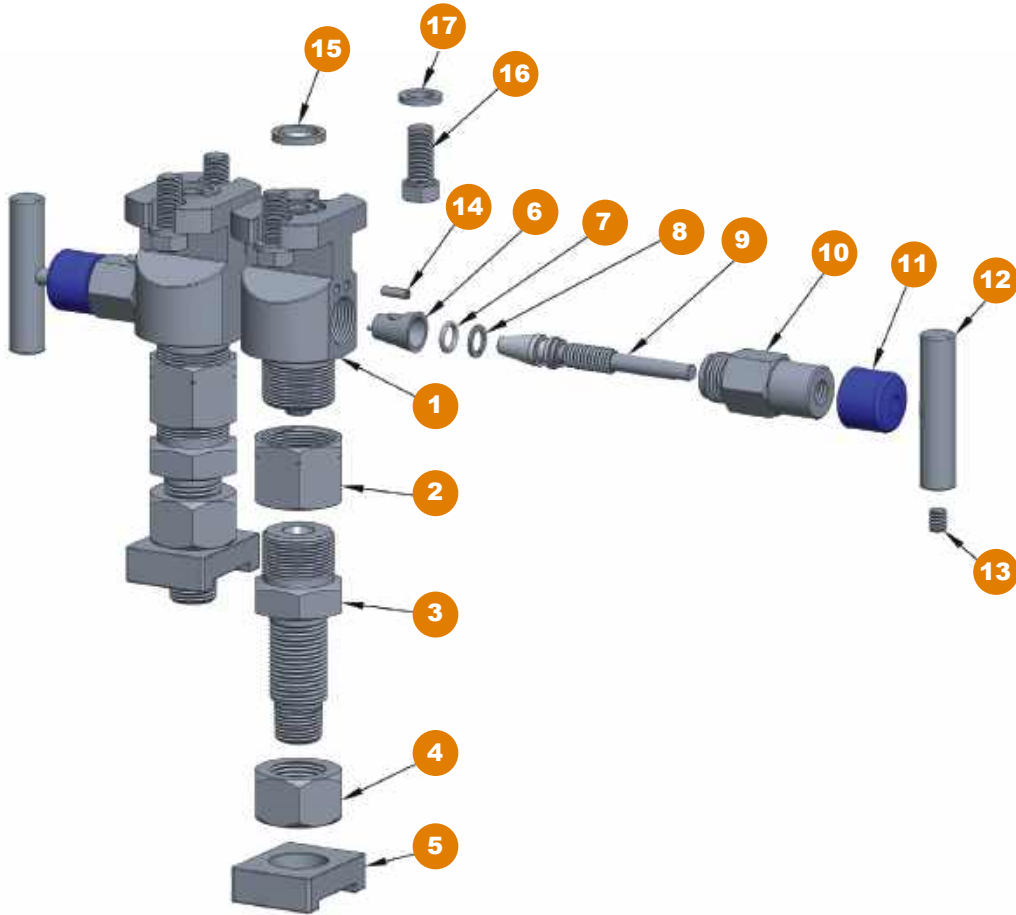
**Side View**



**Bottom View**



**Stabilized Connector with Integral Block Valve**



- 1 Stabilized valve body
- 2 Coupling nut
- 3 Tap body
- 4 Stabilized nut
- 5 Flange adapter
- 6 Soft seat
- 7 FKM o-ring
- 8 PTFE back-up ring
- 9 Non-rotating valve stem
- 10 Valve bonnet
- 11 Dust cap
- 12 Valve "T" handle
- 13 Set screw
- 14 Slotted spring pin
- 15 Gasket ring
- 16 Hex head bolt
- 17 Washer